

**DARDENNE RETRIEVER CLUB**

**MASTER NATIONAL**



**INFORMATION & TRAINING GUIDE**

September 29 – October 9, 2016

St. Louis, Missouri



*Serving nature and you<sup>®</sup>*

**VERSA-LAUNCH REMOTE LAUNCHER SYSTEM**



**THE MOST VERSATILE  
REMOTE LAUNCHER IN  
THE WORLD!**

-360 DEGREE ROTATION  
-75 DEGREE VERTICAL ADJUSTMENT

★ **A MUST HAVE FOR ANY TRAINER** ★

# WELCOME!

Dear Friends,

On behalf of all the members of the Dardenne Retriever Club, we would like to welcome all the owners, handlers, workers and participants to St. Louis, Missouri and the 25th Anniversary Master National!!

The Busch Conservation Area management and staff deserve a tremendous amount of praise for their continued and tireless effort in preparing the grounds for this year's special Master National event. Several years of preparation, project management and work went into this event. We all owe them a huge Thank You!

Also, a special thanks to the City of O'Fallon, City of Chesterfield and our host venues Purina Farms and the Spirit of St. Louis Airport for supporting and providing quality venues for this event.

We are excited to have everyone here and look forward to a wonderful and challenging week of retriever competition.

Good luck to all!!

Sincerely,

Jeff Saladin  
Co-Founder; Secretary  
Dardenne Retriever Club  
St. Louis, Missouri





# LOCATION & DIRECTIONS

## OFFICIAL TEST GROUNDS

### August A. Busch Memorial Conservation Area

2360 Hwy D  
St. Charles, MO 63304

*Directions: From the intersection of Interstate 64 and Highway 94 proceed west to Highway D and turn right. Continue to the entrance of the area on right.*

## OPENING CEREMONY & MEETINGS LOCATION

Thursday September 29  
& Friday September 30, 2016

### Purina Event Center

*Directions: From the intersection of Interstate 64 & Highway 94 proceed south on I-64, exit right onto Chesterfield Airport Rd., turn right at stoplight onto Olive Street Rd. continue on N. Eatherton Rd which will become Hwy 109. Continue south to Hwy 100 go right. Take Hwy 100 West towards Gray Summit, MO. Take a right onto Hwy MM follow for 1.2 miles to Checkerboard Square (Purina Farms entrance.*

## WORKERS PARTY, FRANKIES PARTY, & CLOSING CEREMONY

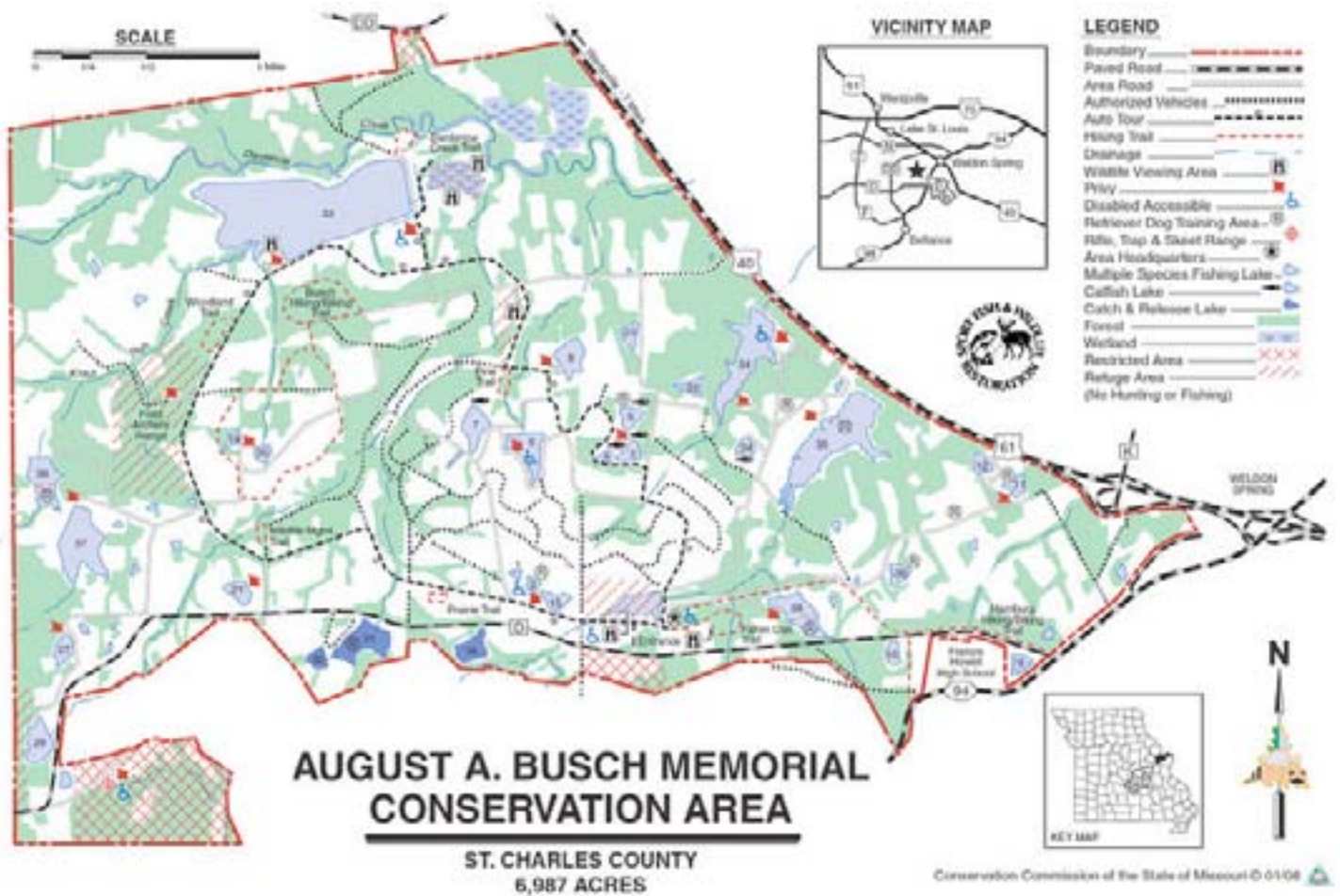
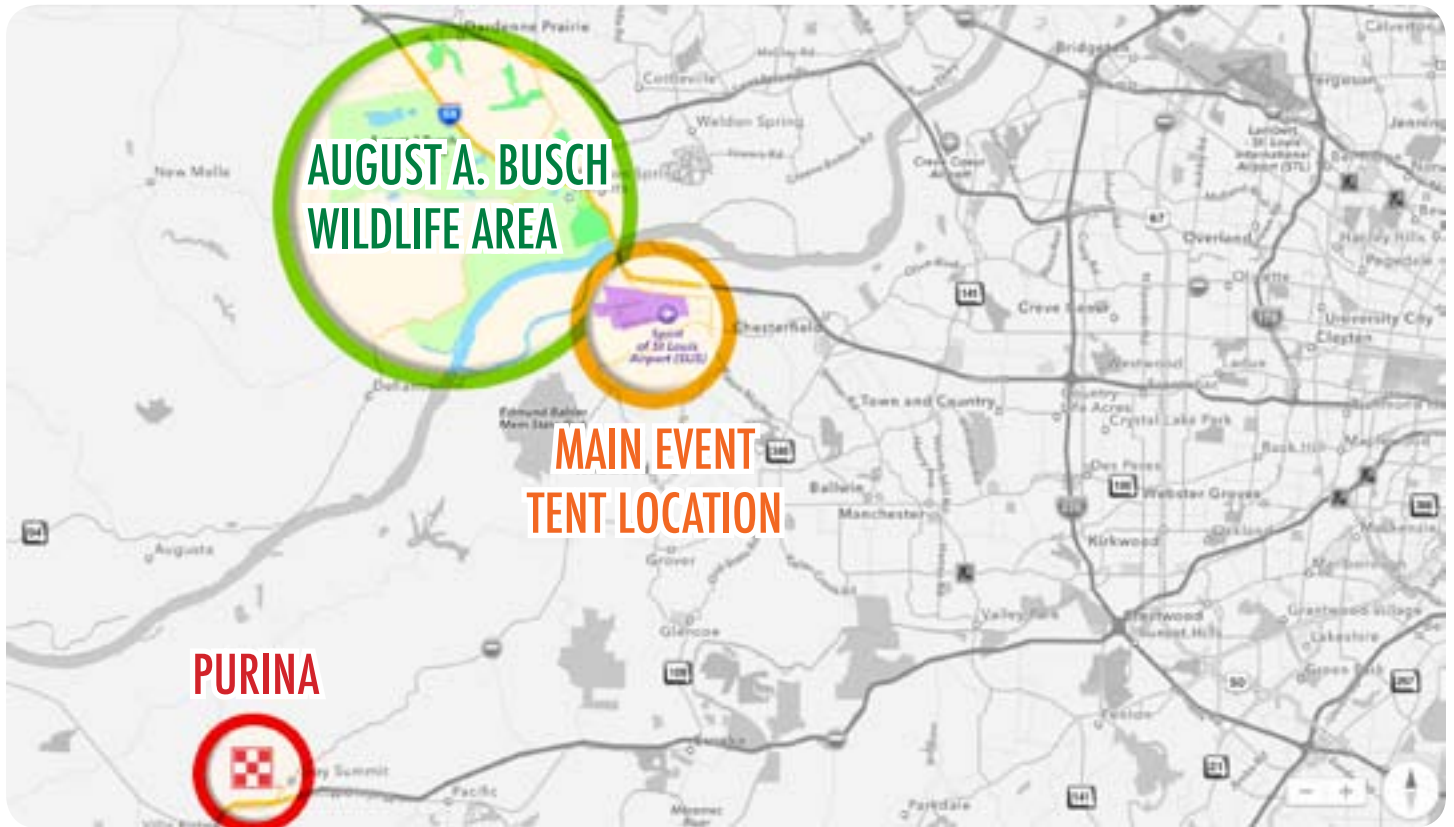
### Spirit of St. Louis Airport

*Directions: From the intersection of Interstate 64 & Highway 94 proceed south on I-64, exit right onto Chesterfield Airport Rd., turn right at stoplight onto Olive Street Rd. continue on N. Eatherton Rd then a left onto Wings Corporate Dr.; then right on Buzz Westfall Dr which turns left onto Paul Haglin Dr. to destination marked with signs.*



RETRIEVERS

ONLINE





# 2016 MASTER NATIONAL SCHEDULE OF EVENTS

## **THURSDAY SEPTEMBER 29, 2016**

Purina Event Center, St Louis, Missouri  
– Gateway Hall

200 Checkerboard Drive, Gray Summit, MO 63039

- 5:00pm – Social Reception
- 6:00pm – Opening Ceremony
- 6:45pm – Intro & Starting Dog Number
- 7:00pm – Handler's Banquet
- 7:00pm – Auction & Raffle

## **FRIDAY SEPTEMBER 30, 2016**

Purina Event Center, St Louis, Missouri  
– Gateway Hall

200 Checkerboard Drive, Gray Summit, MO 63039

- 8:00-9:30am Bitch Check
- 8:00-10:00am – Handler's Registration  
– Great Hall
- 9:00-4:00pm – MNRC Store Sales Begin
- 10:00am – Chief Marshal meets with  
Committee Chairs
- 10:30-11:30 MANDATORY Handler's Meeting  
(Judges Instructions to Handlers)
- 11:30-12:00 – Committee Sign ups for each  
Flight
- 12:00-1:00 – Delegate and Proxy Check In
- 1:00-1:30 – RHTAC Report, AKC Report
- 1:30-3:00 – 2016 MNRC Annual Meeting
- 3:30 – 4:30 Veterinary Sports Medicine Q & A  
—Gateway Hall at Purina Event Center

## **SATURDAY OCTOBER 1, 2016**

- 8:00am Master National Hunt Test Begins –  
Test Dogs at 7:50am

August A. Busch Memorial Conservation Area,  
2360 Highway D, Saint Charles, MO 63304

## **TUESDAY OCTOBER 4, 2016**

- 6:30pm Worker's Appreciation Dinner –  
Spirit of St Louis Airport, Paul Haglin Drive,  
Chesterfield, MO 63005

## **WEDNESDAY OCTOBER 5, 2016**

- 6:00 until 10pm Happy Hour Celebration  
Presented by Lone Duck Outfitters and  
MOMarsh – Friendship Brewing Company, 100  
East Pitman Avenue, Wentzville MO 63385

## **THURSDAY OCTOBER 6, 2016**

- 6:30pm Frankie's Party – Spirit of St Louis  
Airport, Paul Haglin Drive, Chesterfield, MO  
63005

## **SUNDAY OCTOBER 9, 2016**

- TBA – Awards Presentation, Closing  
Ceremonies – Spirit of St Louis Airport, Paul  
Haglin Drive, Chesterfield, MO 63005



# AUGUST A. BUSCH MEMEORIAL CONSERVATION AREA

August A. Busch Memorial Conservation Area is a public conservation area that is owned and managed by the Missouri Department of Conservation; located in St. Charles County, Missouri.

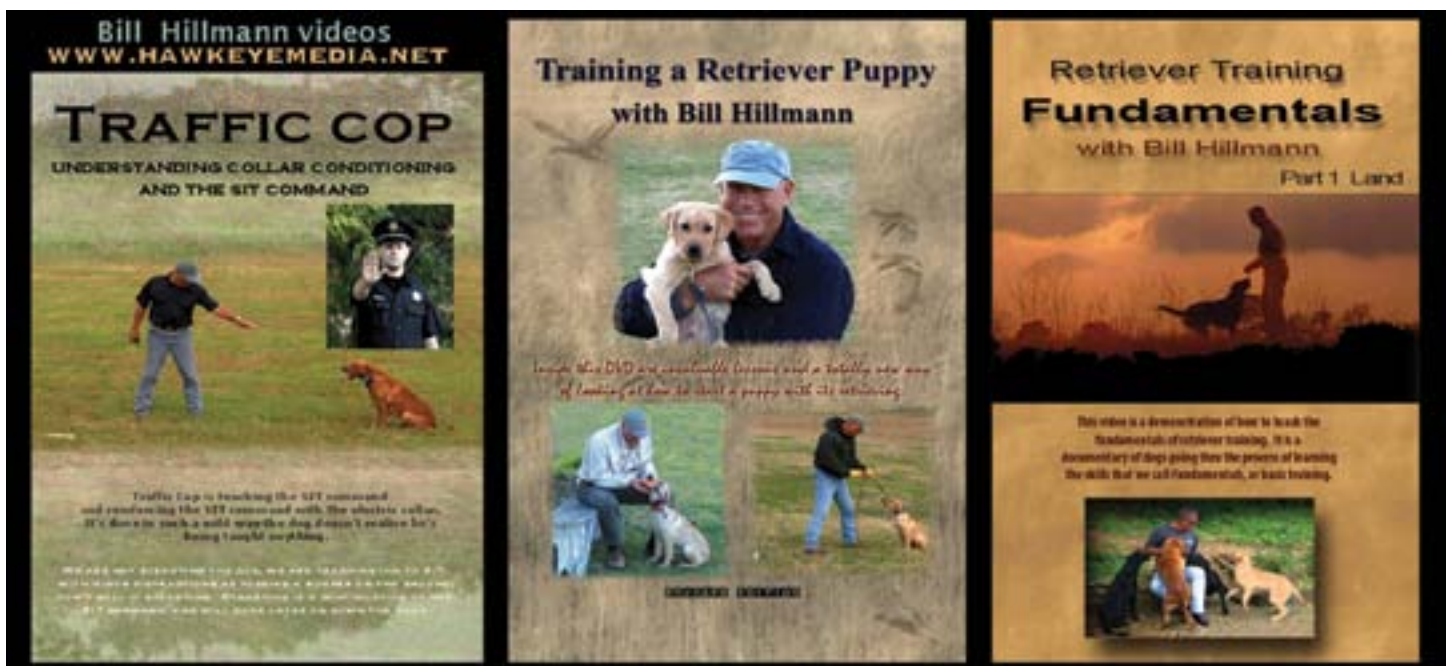
In 1947, Mrs. August A. (Alice) Busch Sr., donated monies to the Missouri Department of Conservation (MDC) to purchase the land from the U.S. government as a memorial to her late husband. During the early 1940's portions of the area were used by the Weldon Spring Ordnance Works and the Department of the Army for the production of TNT and DNT to support the effort of World War II. There are 100 old bunkers formerly used for the storage of TNT still in the area.

The Busch family has a long history of being avid sportsman and conservationists. It should come as no surprise that they would continue that with their generosity and contributions. Also noted, August A. Busch Jr. was a MDC commissioner serving in 1964-65.

The Busch Conservation Area is nearly 7,000 acres with approximately 600 acres of water available. The area is labeled as a multi-use area and offers the public an array of outdoor activities and opportunities for all sporting dog use.

The first National Retriever Championship event was held at Busch in 1950. Since that first national event the Busch Conservation Area has held more national retriever events than any other grounds, public or private, in North America. These events have included the National Retriever Championships, Master National Retriever Hunt Test and several different breed clubs national specialty field events.

Today the area consists of 2,940 acres of forest, 1,000 acres of cropland, 550 acres of lakes and ponds, 80 acres of wetlands, 1,141 acres of old fields, 20 acres of roads and parking lots, and 1,200 acres of grasslands, of which 200 acres is restored prairie. There are 32 lakes and ponds open to fishing, 20 fishless ponds, a spring, 8 miles of intermittent streams, and 6 miles of permanent streams.



# TRAINING GROUNDS

PERMIT #: 37784

We are grateful to all of the property owners who have granted us access to their properties for pre-National training. If you have the opportunity to see one of the land owners please thank them for the use of their land.

If you are training on one of the pre-National training grounds you will only need a permit number that will be given to you at the property draw. This permit number only covers the official pre-National training grounds.

The first draw for Training Ground Property will take place Saturday September 24th at 4 pm. The draw will take place at the Pavilion behind the Department of Conservation Offices at Busch Conservation Area.

The office address is: 2360 Hwy. D, St. Charles , MO 63304 .

This draw will include two consecutive days (Sunday & Monday).

Draws thereafter will be held at the same location (Pavilion) and time (4pm) every other day for the next two consecutive days. (Monday & Wednesday).

Please keep in mind the following rules:

- Do not train on any property that is not designated as an official training property unless you have independently obtained permission to do so.
- Follow all rules as listed for the training grounds and local and state regulations. This is your responsibility.
- Pick up all trash and take it with you. This includes training birds and shotgun/ popper shells.
- Please be respectful of the properties available times, and listed rules.
- If you have a small training group, you may want to consider asking others to join you as the official training properties are very limited this year.





# DARDENNE RETRIEVER CLUB



The name Dardenne has historical and geographical significance both locally and regionally. The Dardenne Creek drains a 165-square-mile watershed in St. Charles County, Missouri, and flows northeast to the Mississippi River. The Dardenne Creek also flows through and bi-sects the August A. Busch Memorial Conservation Area.

The Dardenne Prairie was originally a prairie region which began in the area near St. Peters, Missouri and extended north of Dardenne Creek. The name was borrowed from the Dardenne family, early pioneers in the Mississippi Valley.

The first known retriever field trial in Missouri was held in 1938 on private ground of the Dardenne Club, a famed and historic duck club where the Dardenne Creek meets the Mississippi River. The club dates back to the mid 1800's.

After many discussions over the course of the last few years about forming a new retriever club in the St. Louis area because the need and opportunity was present, the four founding members, of what is now known as the Dardenne Retriever Club; held an organizational meeting on July 11, 2015.

The founding members each have a long history of experience and involvement in field trials, hunt tests, obedience, agility, training, breeding and judging. As such we saw the need in the St. Louis area for a new all-breed AKC club that would serve a void in hosting AKC licensed hunt tests, field trials and related activities. As such, the Dardenne Retriever Club with its' 40 members will continue with plans to host AKC Retriever Field Trials and Hunt Tests each year.

We welcome you all to St. Louis, Missouri, August A. Busch Conservation Area and the 25th Anniversary Master National.



# HOST CLUB RAFFLE

*You could WIN!*

## PACKAGE #1

Retriev-R-Trainer Versa Launcher 4-shot

## PACKAGE #2

MOmarsh Invisilab  
Gunners Kennel

## PACKAGE #3

Gunners Up Remote Launcher  
Thunder Equipment Shotgun Simulator

## PACKAGE #4

Zinger Winger  
Ruff Tuff Kennel



**RAFFLE  
TICKETS**

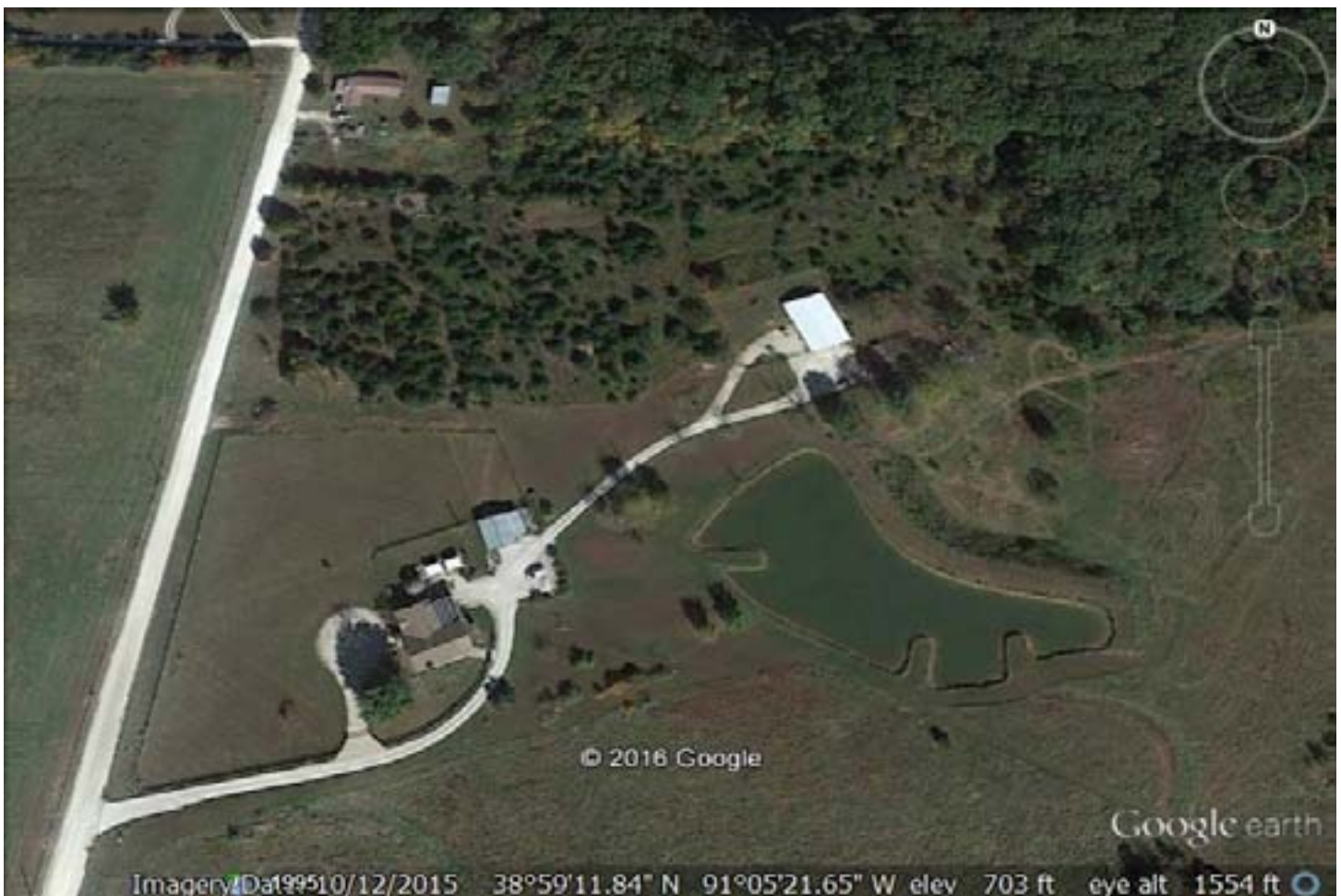
**5 for \$20**

**30 for \$100**

## TRAINING AREA #1

# INNISFREE RETRIEVERS

410 Aubuchon Road – Troy, MO 63379



**GPS coordinates: 38°59'11.84N 91°05'21.65\" W**

**# of groups: 1**

**Land: Yes**

**Water: Yes**

**Distance from Busch Conservation Area: 42 minutes**

**RULES:**

**Dates available: Sept 25 – Oct 8**

**Hours: 8am – 5 pm**

**ATV's: YES**

**Live Flyers/Ammo: NO**





## TRAINING AREA #2

# SORENSEN KENNELS

1073 Hwy DD – Defiance, MO 63341



**GPS coordinates: 38°41'00.52" N 90°48'23.64" W**

**# of groups: 1**

**Land: Yes**

**Water: Yes**

**Distance from Busch Conservation Area: 6 minutes**

### **RULES:**

**Dates available: September 25 – September 30**

**Hours: 8am-5pm**

**ATV's: NO**

**Live Flyers: NO**



TRAINING AREA #3

# STILLWATER KENNEL & GAME FARM

298 Stillwater Drive – Silex, MO 63377



**Distance from Busch Conservation Area: 49 minutes**

**# of groups: 2**

**GPS Coordinates: 39°05'30.07" N 91°03'00.59" W**

**Land: Yes**

**Water: Yes**

**RULES:**

**Dates available: September 25 – October 8**

**Hours: 8am-5pm**

**ATV's: YES**

**Live Flyers:**



## TRAINING AREA #4

# WATSONS LAKE

Address



**GPS coordinates: 38°43'48.68" N 90°54'18.06" W**

**Distance from Busch Conservation Area: 15 minutes**

**# of groups: 1**

**Land: Yes**

**Water: Yes**

**RULES:**

**Dates available: September 26 – October 8**

**Hours: 8am-5pm**

**ATV's: YES**

**Live Flyers: YES, just not towards building**



## TRAINING AREA #5

# HOPEWELL #1

3870 Hopewell Rd – Wentzville, MO 63385



**GPS coordinates: 38°43'44.38" N 90°50'53.05" W**

**Distance from Busch Conservation Area: 15 minutes**

**# of groups: 1**

**Land: No**

**Water: Yes; Water Only**

**RULES:**

**Dates available: September 26- October 8**

**Hours: 8am-5pm**

**ATV's: YES**

**Live Flyers: NO**

*We Help Make Your Dog*

**THE BEST IT CAN BE.**



LEARN MORE AT [AVERYSPORTINGDOG.COM](http://AVERYSPORTINGDOG.COM)





*We Help Make Your Dog*

**THE BEST IT CAN BE.**



LEARN MORE AT [AVERYSPORTINGDOG.COM](http://AVERYSPORTINGDOG.COM)





## TRAINING AREA #6

# HOPEWELL #2

3812 Hopewell Rd – Wentzville, MO 63385



**Distance from Busch Conservation Area: 15 minutes**

**GPS Coordinates: 38°43'51.60" N 90°50'43.89" W**

**# of groups: 1**

**Land: Yes**

**Water: Yes**

**RULES: Park by out building only, flyers can be shot but knock on door to make sure kids are not sleeping prior to doing so.**

**Dates available:**

**Hours: 8am-pm**

**ATV's: YES**

**Live Flyers/Ammo: YES**

## TRAINING AREA #7

# SCHWEDE #1

621 Hopewell Rd; Wentzville, MO



**Distance from Busch Conservation Area: 15 minutes**

**GPS Coordinates: 38°43'37.92" N 90°50'47.38" W**

**# of groups: 1**

**Land: Yes; Land Only**

**Water: No**

**RULES:**

**Dates available: September 26 – October 8**

**Hours: 8am-5pm**

**ATV's: YES**

**Live Flyers/Ammo: NO**

## TRAINING AREA #8

# SCHWEDE #2

Address



**GPS Coordinates: 38°43'38.62" N 90°50'37.82" W**

**# of groups: 1**

**Land: Yes; Land Only**

**Water: No**

**Distance from Busch Conservation Area: 15 minutes**

**Rules:**

**Dates available: September 26 – October 8**

**Hours: 8am-5pm**

**ATV's: YES**

**Live Flyers: YES**



## TRAINING AREA #9

# SCHWEDE #3

Address



**Distance from Busch Conservation Area: 15 minutes**

**GPS Coordinates: 38°43'38.20"N 90°50'28.16"W**

**# of groups: 1**

**Land: Yes; Land Only**

**Water: No**

**RULES:**

**Dates available: September 26 – October 8**

**Hours: 8am - 5pm**

**ATV's: YES**

**Live Flyers: YES**

TRAINING AREA #10

# CURT DANIEL'S HOMESTEAD

21 Trophy Buck Lane – Foristell, MO 63348



**GPS coordinates: 38degrees 47'34.39" N, 90degrees 57'36.93" W**

**Distance from Busch Conservation Area: 25 minutes**

**# of groups:**

**Land: Yes**

**Water: Yes**

**RULES: Notify the property owner before training on grounds**

**Dates available:**

**Hours:**

**ATV's:**

**Live Flyers: NO**

TRAINING AREA #11

# CURT DANIEL'S HOMESTEAD

21 Trophy Buck Lane – Foristell, MO 63348



**GPS coordinates: 38 degrees 45' 30.51"N, 90**

**degrees 45'30.51"W**

**Distance from Busch Conservation Area:**

**# of groups:**

**Land: Yes**

**Water: Yes**

**RULES:**

**Dates available:**

**Hours:**

**ATV's:**

**Live Flyers: YES**



\*\*\* TRAINING LOCATIONS – (NOT IN THE DAILY DRAW)

## Weldon Spring Conservation Area

River Access area – (follow directions on area map obtained at front entrance to Busch C.A.)



Fire Lake – (located south of Hwy 94 ¼ before stoplight for Hwy D)



# Busch Conservation Area

**Lake 9** – (Off of Hwy D near the high school; please follow local regulations as posted at the site)



**Lake 10** – (off of Hwy D prior to entrance of Busch C.A.; please follow local area regulations as listed in area map an pamphlet)





**Lake 16** – (off of Hwy D a mile past entrance of Busch C.A.; please follow local area regulations as listed in area map an pamphlet)





# Whetstone Conservation Area

(located in Williamsburg, MO)



# Maintz Conservation Area

(located in Millersburg, MO)



# Pyramid State Park

(located in Pinckneyville, Illinois)





# EMERGENCY CONTACTS

## MIDWEST VETERINARY REFERRAL CENTER

17497 North Outer 40 Drive  
Chesterfield, MO 63005  
636-536-4991

Emergency clinic open 24 hours/7 days a week  
(no appointment required).

Directions: Take I-64 east approximately 5 miles to Boone's Crossing; turn left over the highway; go left on outer road to address.

## COTTEVILLE COMMUNITY FIRE PROTECTION DISTRICT

Emergency Dial 911

## ST. CHARLES COUNTY POLICE DEPARTMENT

101 Sheriff Dierker Court  
O'Fallon, MO 63366  
636-949-3000  
Emergency Dial 911

## MISSOURI STATE HIGHWAY PATROL

Emergency Dial 911

\*\*\*(*Troop C is located at the northeast corner of I-64 at Highway 94 in St. Charles County across interstate from test grounds.*)

## PROGRESS WEST HEALTHCARE CENTER

2 Progress Point Parkway  
O'Fallon, MO

Directions: Take Hwy D to left on Hwy 94 over I-64 and turn left on the outer road. Follow outer road to Hospital.

## ST. CHARLES COUNTY AMBULANCE DISTRICT

Emergency Dial 911







THANK YOU  
&  
GOOD LUCK TO ALL!



WELCOME Y'ALL TO THE

2016 MASTER NATIONAL

**CONGRATULATIONS ON YOUR QUALIFICATION(S)**

*Welcome to this year's celebration hosted by Dardenne Retriever Club of Weldon Springs, MO. We wish all of you Good Luck and a great event. Now is the time to bring your very best. This is Hustle's Fourteenth Master National and he brings his kennel sisters Pixie and Hope and brother Kid with him this year, although we are not with you in body we still return every year in spirit.*

*May you have joy, fun and seasons in the sun, as did we with our family and friends. This side of the bridge is great, but we know we are missed over there.*

*A special Good Luck to our kennel sister and brother, Faith 12yrs old and Powers 9yrs old.*

*Sincerely, Hustle, Pixie, Hope and Kid*

*"Hustle", "Pixie", "Hope", "Kid" we miss you. What a joyful reunion it will be when we cross that bridge and you all meet us ready for your next National. We love you, Mom and Dad Kress.*





*National Retriever Club Dedicated  
to the Amateur Handler*

Visit:  
[www.MasterAmateur.com](http://www.MasterAmateur.com)



# Congratulations to all the Master National Qualifiers!

*We are Wishing Each Team the Very Best!*

*~ from the Master Amateur Retriever Club*

*Good Luck!!*



*Charter Lifetime Individual and Club Memberships are  
available now, this special offer will be ending soon!*

**See how to become a Charter Member – Visit our website at: [www.MasterAmateur.com](http://www.MasterAmateur.com)**