

2011 MASTER NATIONAL – 20TH ANNIVERSARY
PRESIDENT – JOHN MARCHICA
HT CHAIRMAN – FRANK DURHAM

at



ANATIDAE FARM, VIENNA MD

2011 Master National Important Dates

2

- September 30, 2011: MNRC Opening Ceremony and Handlers' Party
- October 2, 2011: Master National Event Begins
 - ▣ Oct 2, "Camo Concert" at Layton's Chance Vinyard
- October 3, 2011: SRC Crab Feast
 - ▣ Oct 4, "Camo Karaoke Party" at Millie's Roadhouse
- October 5, 2011: MNRC Workers' Party
- October 6, 2011: MNRC Frankie's Party
- October 9, 2011: MNRC Closing Ceremony

20th Anniversary of Master National

Host Club –Susquehanna Retriever Club

3

- ❑ AKC non-profit retriever club –501(c)(7) based on the Eastern Shore of Maryland (EIN 521643271)
- ❑ Began in 1989, sanctioned by AKC in 1991, member of MNRC 1991
- ❑ Approximately 45 members
- ❑ Hold 2 Hunt Tests annually –very well attended
- ❑ www.susquehannaretriever.com
- ❑ President: Frank Durham, Vice President: Will Kernodle, Secretary and Treasurer: Terri Stevens
- ❑ Club members and Board of Directors have competed in and been involved with MNRHT events for many years

2011 Location – Eastern Shore MD



4

Dorchester
County,
Maryland

Part of Atlantic
Flyway!

Blackwater
National
Wildlife Refuge
- 27,000 acres
of wetlands and
brackish tidal
marsh

- Maryland , one of the Middle Atlantic states of the United States.
- The Maryland Eastern Shore is a fairly wide peninsula between the Chesapeake Bay and the Atlantic Ocean.
- It has hundreds of miles of shoreline from pristine rivers, marshlands, Atlantic Ocean
- Significant farmland, forests, modest cities, quaint waterfront towns and small historic villages along the Chesapeake.



Chesapeake Bay



Black Eyed Susan



Blue Crab



Oriole



Terrapin

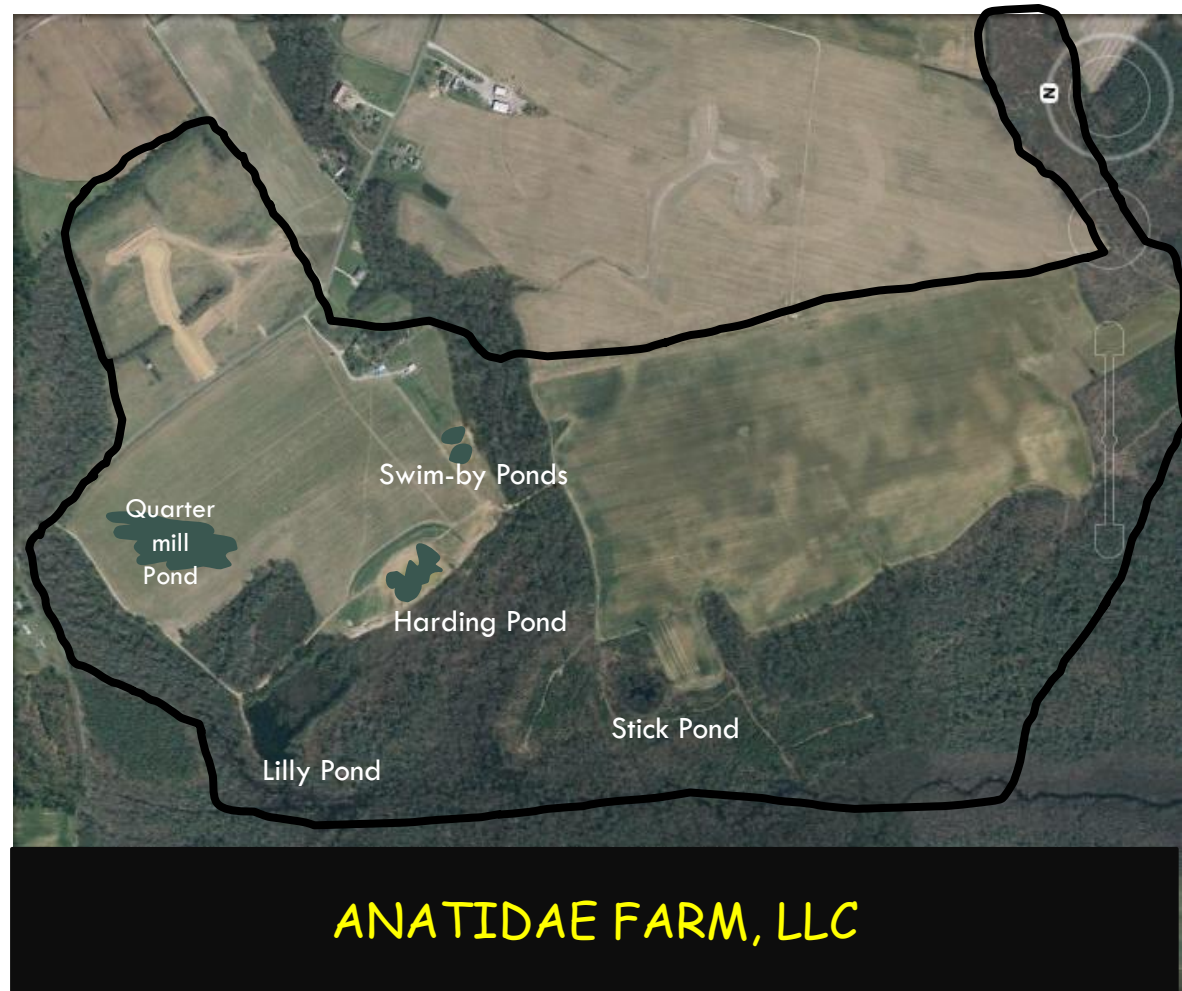


Anatidae Farm – 2011 Master National Main Grounds

5

Anatidae –
pronounced
“a-NAT-a-day”

- the Latin name
for the biological
FAMILY that
includes ducks,
geese and
swans



ANATIDAE FARM, LLC

Anatidae Farm

6

440 acres on the rural Eastern Shore of MD. Several natural ponds and 4 man-made training and technical ponds.

Additionally, we have access to thousands of other acres of top quality training grounds and water for training before the event

Training 🐾 Trialing 🐾 Hunting



Quartermil Pond

Other 2011 Master National Grounds

7

Fuguet Farm

Located in Trappe, MD (20 minutes from Anatidae Farm)

Lovely grounds and technical water



Other 2011 Master National Grounds

8

Watson Farm

Located in East
New Market
MD (15 min
from Anatidae
Farm)

>150 acres
land and water



Other 2011 Master National Grounds

9

Woodland Property

Located in
Seaford DE (22
min from
Anatidae Farm)

>150 acres
land and water



Eastern Shore, MD - Weather

10

Perfect weather for an out door event!

Ocean City Maryland

	Apr	May	Jun	Aug	Sep	Oct
Record High °F	95	99	102	101	98	93
Normal High °F	67	76	84	87	81	70
Normal Low °F	44	54	63	66	59	47
Record Low °F	23	32	42	43	32	24
Precip inches	3.3	3.5	3.7	4.3	3.5	3.1



Convenient Transportation

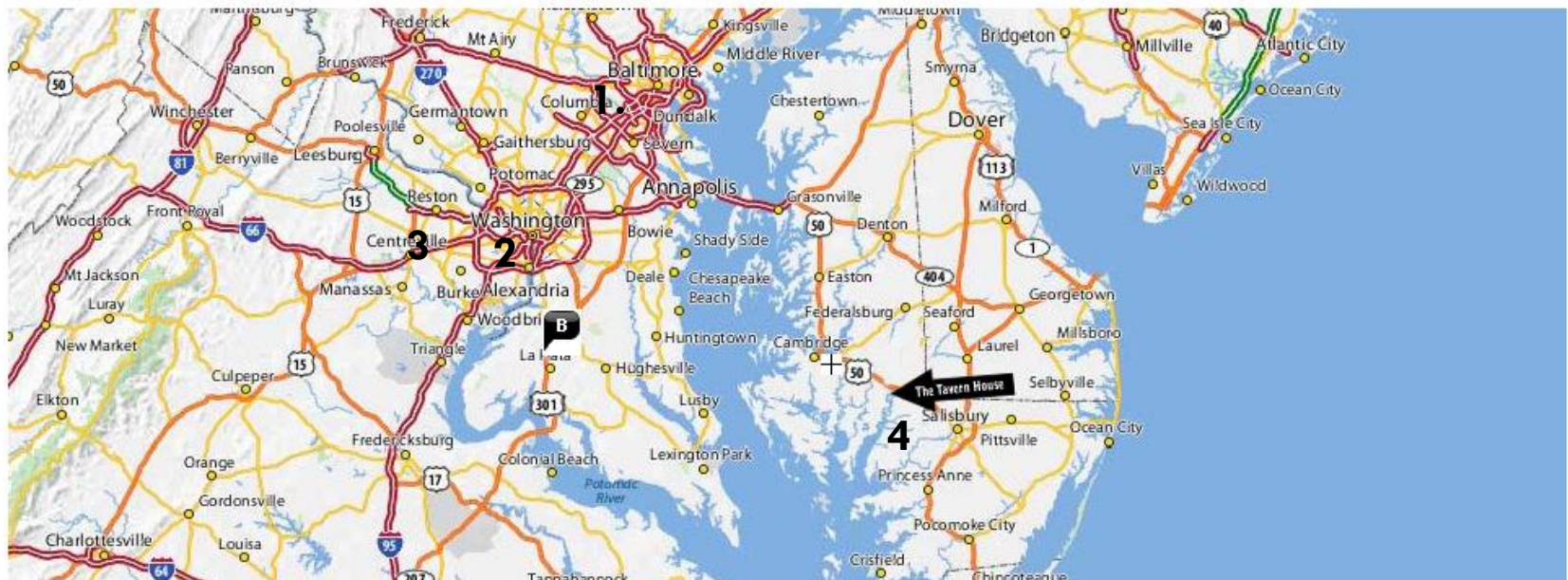
11

□ Nearby Airports

1. Baltimore Washington International (BWI) (1.5hr)
2. Reagan National Airport (DCA) (2 hr)
3. Dulles National Airport (IAD) (2 hr)
4. Salisbury Airport (SBY) (30 min)

Highways

- Right on US Route 50
- North and South: I-95, MD Rt-13, US-301
- West: I-66, I-70



Host Hotel

12

Holiday Inn Express CAMBRIDGE

2715 Ocean Gateway

Cambridge MD 21613

Hotel Front Desk: 1-410-221-9900



\$ 85/ night – MNRHT guaranteed room rate, includes breakfast

\$15 pet fee/ room (1 time fee)

Other Lodging – within 8 miles

13

Hyatt Regency Chesapeake Bay Golf Resort, Spa and Marina

100 Heron Blvd. at Route 50,
Cambridge, Maryland, USA 21613
Tel: +1 410 901 1234



SEE ALSO Lodging pages at the following websites:

www.tourdorchester.org

www.tourtalbot.org

www.wicomicotourism.org

NUMEROUS RV PARKS AND CAMPGROUNDS

- ❑ Sandy Hill Family Camp
- ❑ Woodlawn Campground
- ❑ Duck Neck Campground
- ❑ Madison Bay Campground
- ❑ Anatidae Farm – onsite – must be fully contained (limited to 10)

\$ 90– average room rate PET FRIENDLY



Comfort Inn & Suites

2936 Ocean Gateway , Cambridge, MD, 21613

Phone: (410) 901-0926

Dining - Maryland is for crabs!

14

- [Millies Bar & Grill](#), Old Ocean Gateway • Vienna , MD 21869 • (410) 376-3130
A local favorite offering delicious seafood in a casual atmosphere.
- [Dockside Bar & Grill](#) , 638 C. Taylors Island Road • Taylors Island, MD 21669, Slaughter Creek Marina, 410-221-1645 Beautiful sunsets, good food, outdoor dining weather permitting and great events throughout the year await you at Dockside Bar & Grill.
- [Big Mario's Rusticana Restaurant](#) , 2760 Dorchester Square • Cambridge, MD 21613 , 410-228-1515
Authentic Italian cuisine offering superb pizza, pasta, calzones, subs, and desserts in a family atmosphere.
- [Canvasback Restaurant & Pub](#) , 420 Race Street • Cambridge, MD 21613, 410-221-5177
Unique restaurant offering casual fine dining and some nights a pub with live blues performances. The cuisine could be called Eastern Shore Maryland mixed with Italian.
- [Great Slates](#) , 738 Cambridge Plaza • Cambridge, MD 21613, 410-901-2720
Offering live music, billiards, video games, televised sports events on 100 televisions with two large screens.
- [Portside Seafood Restaurant](#) , 201 Trenton Street • Cambridge, MD 21613, 410-228-9007
Casual dining overlooking Cambridge Creek, specializing in local seafood, hot steamed crabs, soft crabs, oysters in season, and fresh cut steaks.
- [Snapper's Waterfront Cafe](#) , 112 Commerce Street • Cambridge, MD 21622, 410-228-0112
Enjoy southwestern cuisine including delicious seafood or a savory steak. Call for hours.
- [Suicide Bridge Restaurant](#) , 6304 Suicide Bridge Road • Cambridge, MD 21643, 410-943-4689
Enjoy fine dining in a relaxed atmosphere along the Choptank River at this seafood restaurant serving crab balls, stuffed flounder, grilled tuna, rockfish, and prime rib.

Meeting and Banquet Facilities Nearby

15

□ Sailwinds Meeting Facility

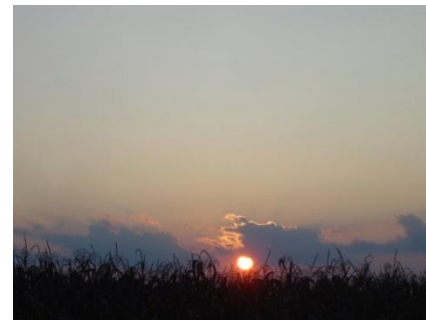
- Welcome Banquet – Sept 30
- MNRC Annual Meeting – Oct 1
- Workers' Banquets – Oct 5

□ Daily Lunches provided by:



□ The pavilion at Anatidae Farm

- SRC Crab Feast – Oct 3
- Frankie's Party – Oct 6



Local Attractions

16

Cambridge, MD

Stillwater Spa
Golf / Marina
Tennis / Beach
Volleyball /
Boating
Water sports /
Nature trails

www.tourdorchester.org

Dover Downs, DE

Casino (3200
slots), Dover
International
Speedway
NASCAR® races,
and Harness
Racing nightly

www.doverdowns.com

Blackwater Wildlife Refuge

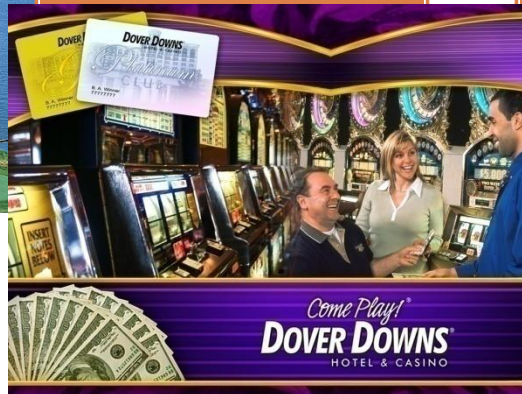
Huge flocks of ducks,
geese and swans
migrate through the
refuge. Largest
nesting population
of bald eagles on
the East Coast.

www.friendsofblackwater.org

Assateague Island National Seashore

In addition to herds
of wild horses,
Assateague's ocean
beaches are dog
friendly!!

www.dnr.state.md.us



Nearby Cities

17

Annapolis, MD

(1 hr)

Maryland's state capital.

“America's Sailing Capital.”

It's also home for the [U.S. Naval Academy](http://www.visitannapolis.org).

www.visitannapolis.org



Ocean City, MD

(45 min)

10 miles of beautiful beaches – and they're FREE!!!

They're also dog-friendly in October!

www.ococean.com



Baltimore, MD

(1.5 hr)

The city by the bay. Known as “Charm City”.

World-famous Inner Harbor, National Aquarium

www.baltimore.org



Washington DC

(2hr)

Our nation's capital!

www.dc.org



Health Access

18

Veterinarians

□ Choptank Animal Hospital

430 Dorchester Ave
Cambridge, MD
410-221-0444
M-F 9 AM – 5 PM , Sat 8 AM-11PM

□ Bayside Animal Hospital

2933 Ocean Gateway
Cambridge, MD
410-221-0444
M-F 7:30 AM – 7 PM , Sat 8 AM-1PM

□ PetsER

329 Tilghman Rd
Salisbury, MD
410-543-8400
M-Th 6 PM-8 AM, Fri 6PM until Monday 8 AM

Medical Facilities

□ Dorchester Memorial Hospital 410-228-5511

■ 300 Byrn St, Cambridge MD

□ YourDoc'sIn

■ Easton 410-822-0220

■ 8163 Ocean Gateway

■ Salisbury 410-944-0187

■ 2425 North Salisbury Blvd

Dog Lodging on site!!

19



MARYLAND SHORE PET RESORT™

MNRHT discounts available!!

Call 410-376-2107 for reservations



You'll Wish You Were Vacationing Here!

Lavish Yet Affordable

- 🐾 Spacious Accommodations with Cozy Bedding
- 🐾 Loving Care & Individualized Attention
- 🐾 Focus on Cleanliness & Safety
- 🐾 Lots of Playtime and Activities for Dogs & Cats
- 🐾 Spa & Therapy Packages
- 🐾 Get Fit Program
- 🐾 Training & Grooming



We Believe an Active Pet is a Happy Pet!



410-376-2107

4556 Ocean Gateway
Vienna, MD

www.MarylandShorePetResort.com



Other website information

20

- www.susquehannaretriever.com
- www.masternational.com
- www.cambridgemainstreet.com
- www.tourdorchester.org
- www.easternshore.com
- <http://visitmaryland.org>

- www.MarylandShorePetResort.com
- www.WalkerBranchRetrievers.com

Susquehanna Retriever Club and Anatidae Farm are looking forward to hosting the 20th Anniversary MASTER NATIONAL together with John Marchica and the MNRC!!

Perfect combination for a successful and enjoyable Master National !!

- Experienced People
- Beautiful grounds and water for both training and HT
- Convenient location with many nearby recreations and attractions

2011 Master National - 20th Anniversary

Region 1 – Eastern Shore Maryland